

Heritage tour #3

ORGELET



Orgelet ©Jura Tourisme

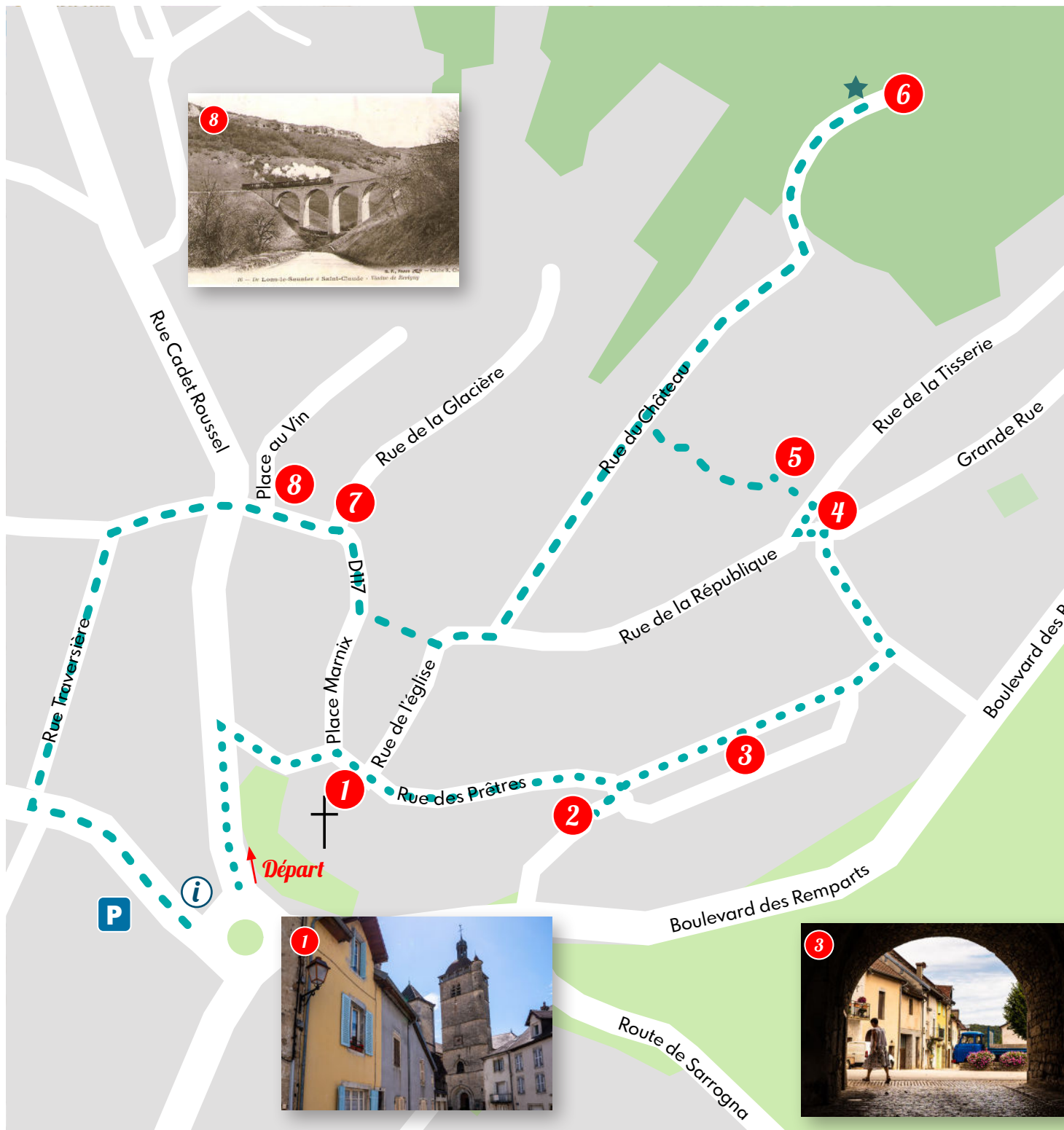


TERRE D'ÉMERAUDE
TOURISME

Évadez-vous en Sud Jura!

terredemeraudetourisme.fr
09 70 71 77 05

- Distance : 2.1 km
- Length : 45 min long
- Starting point : tourist information office



Whether it is alone, with family or with friends, discover the town of Orgelet. Let yourself wander on a stroll associating nature and heritage.

Orgelet, a town of 1600 inhabitants at the bottom of Mount Orgier, used to be a medieval city. Thanks to its remarkable heritage, the town was awarded with the title of "little city of character" of Bourgogne-Franche-Comté.

NB : the tour features a bit of elevation gain, we recommend to wear adapted shoes to do it.

1 Church Notre-Dame

Built between the 13th and the 17th century, this church is noticeable due to its special architecture. Inside the nave, tribunes are separated by large balustrades. Behind you, on your right, the floor is tiled with a medieval tiling dating back from the 13th century and which was found in the ruins of Orgelet castle. You can see the lion of Burgundy, symbol of Franche-Comté. The church also contains the oldest organ of Franche-Comté. Dating back from 1627, it is essentially composed of music from the Renaissance. Then, follow the rue des prêtres, where priests who officiated in church Notre-Dame used to live.



What can you notice on the floor at the threshold of the church?
 Answer: a heart made of tiles on a chalice; Orgelet knows how to greet its visitors!

2 The Porch

In the 13th century, Orgelet was a fortified city. This porch was one of the 4 entrances to the village center. Below this arch, you can imagine a portcullis which prevented intruders from entering. You are now Place du Bourg Merlia, where tanners were working the leather.



3 The Grenette

Built in 1833, it was used as a covered market for seeds. Nowadays, La Grenette is a community center.

In the 17th century, at this place was a pond. The animals came there to drink on the days of the fair. At the time, the region was mostly agricultural. Orgelet meadows were spreading to develop the cattle farming of bovine and milking cows.

What is the name of the typical cow species of Franche-Comté, whose milk is used to make comté cheese?

Answer: the Montbéliarde.



4 Cadet Roussel headstone

At number 19 on Rue de la République, is the birth house of Cadet Roussel. From a modest family, he managed to get himself appreciated by the higher society due to his merit, and that, despite some eccentricities that gave him a famous nursery rhyme that you might have heard of.

What nickname did the inhabitants give to Cadet Roussel?

Answer: the child of Orgelet



5 The potter's pathway

This quite stiff slope is located rue de la Tisserie, where, as its name indicate, old textile workers used wool and hemp.



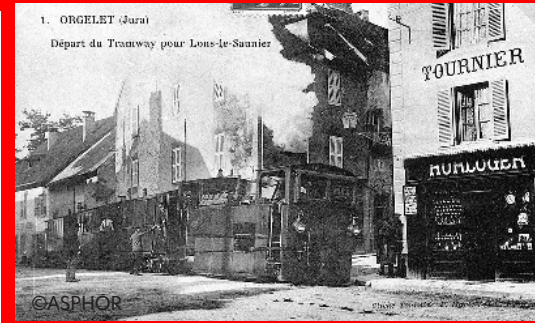
7 Rue de la Glacière

In this street, in the 18th century, a cold room was dug. At that time, it was used to stock the ice coming from the ponds.

6 The ruins of Orgelet castle

Orgelet castle was built in the 12th century by Jean de Chalon. He built a lot of fortresses, including the one in Orgelet, to protect the Salt Roads.

Nowadays, there are only 3 vestiges left from the castle: a tower, an arrow slit and a defensive wall. Surprising but true; ramparts have been found at the heart of the town, under a house.



8 The Place au vin (wine square)

Recently renewed, this spacious square used to be the market place. People were selling wines from the producers of Côtes du Jura. Actually, wine business was one the main source of income for the city.

Also, the street in front of you, rue Cadet Roussel, used to be the path of the countryside railroad launched in 1898, a network of steam tram lines that went from Lons-le-Saunier to Saint-Claude, going through Orgelet.

As the trainline had a lot of technical difficulties with its engines, going through two World Wars and a major economic crisis, it definitely ceased to exist in 1950.

CONTINUE YOUR DISCOVERY...

... OF ORGELET

Along the forestry tracks of Mont Orgier, during a shaded tour of 3,6 km, you will be able to see a variety of trees and species of plants, especially the Pin Président (pine) which is more than 40m high!

... OF TERRE D'ÉMERAUDE

If you liked this tour, get the one for the towns of Arinthod, Moirans-en-Montagne and Clairvaux-les-lacs.

